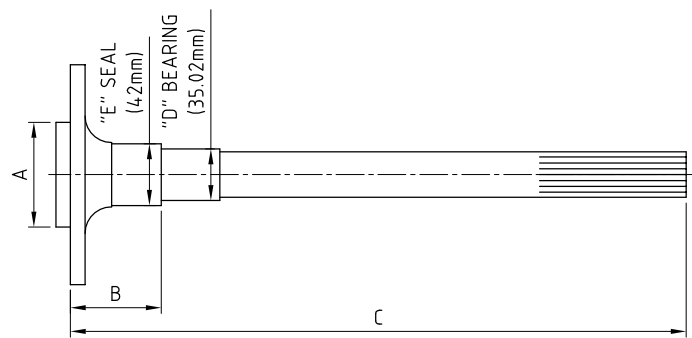
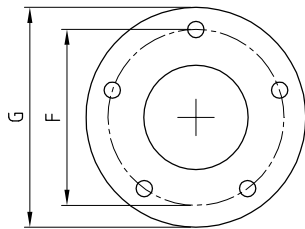


SMALL BEARING 35.02mm 1541H OR 4140 INDUCTION HARDENED ALLOY AXLE

BILLING ADDRESS	SHIPPING ADDRESS
-----------------	------------------

NAME:	NAME:
ADDRESS:	ADDRESS:
SUBURB:	SUBURB:
STATE:	STATE:
POSTCODE:	POSTCODE:
PHONE:	PHONE:
FAX:	
E-MAIL:	

MEASURING FOR INDIVIDUAL AXLE LENGTHS



BRAKE TYPE :

BEARING END TYPE :

TYPE OF REAR END :

SPLINE COUNT :

STUD SIZE / TYPE :

A : B :

D : E :

F : G :

DRIVERS SIDE DIMENSIONS:

C :

MATERIAL
1541H / 4140
OFFICE USE

PASSENGERS SIDE DIMENSIONS:

C :

MATERIAL
1541H / 4140
OFFICE USE

ADDITIONAL INFORMATION:

.....

.....

STANDARD

- AXLE FLANGES DRILLED WITH 1" HOLE FOR ACCESS TO RETAINER BOLTS
- AXLE FLANGES DIAMETER "G" STANDARD = 150mm
- AXLES DRILLED TO ACCEPT 0.610" KNURLED PRESS IN STUDS (UNLESS SCREW IN TYPE ORDERED)
- 25 SPLINE AXLES HAVE SPLINE WITH 30° PRESSURE ANGLE
- 28 & 31 SPLINE AXLES HAVE SPLINE WITH 45° PRESSURE ANGLE
- ALL SPLINES ARE CUT TYPE
- MATERIAL :1541H OR 4140 INDUCTION HARDENED USA ALLOY AXLE
- AXLES ARE PACKAGED IN CARDBOARD BOXES FOR SAFE DELIVERY

CONTACT DETAILS

ALTRA 9
P.O BOX 5570,
BRENDALE BC,
QLD, 4500

PHONE: (07) 3325 5213
FAX: (07) 3325 5452
WEB: www.altra9.com.au
EMAIL: info@altra9.com.au

- WHEN PLACING AN ORDER YOU AGREE TO OUR TERMS AND CONDITIONS
- TERMS AND CONDITIONS ARE AVAILABLE ON WEBSITE
- FULL PAYMENT IS REQUIRED BEFORE ORDER WILL BE PROCESSED

PAYMENT METHODS

CASH, PAYPAL, BANK CHEQUE, PERSONAL CHEQUE (MUST CLEAR BEFORE GOODS ARE DESPATCHED),
DIRECT DEPOSIT : WESTPAC, ALTRA 9 PTY LTD, BSB: 034 072, ACCOUNT: 198 517